

Milking 50, 500 or 5000 cows

SEMEX WORKS EVERYWHERE



Semex Sweden
FRONTRUNNER


SEMEX[®]

0200HO00379 **GP-CAN ST BLF CVF RDC**
MORSAN FRONTRUNNER *RC
TALENT *RC X JAMES

Reg.: HOCANM7472411

Född: April 6, 2004 aAa: 231465 DMS: 234,123

GLPI +1067

GEBV 10*APR

PRODUCTION

Besättningar	87	kg	%	
Dottrar	122	Mjök	+94	
Laktationer	194	Fett	+13	+0.09
Säkerhet	95%	Protein	+20	+0.16
Döttrars medeltal (ME) Mjök 11570 Fett 432 Protein 372				



Maplelane Man Frn Vail Tw
2009

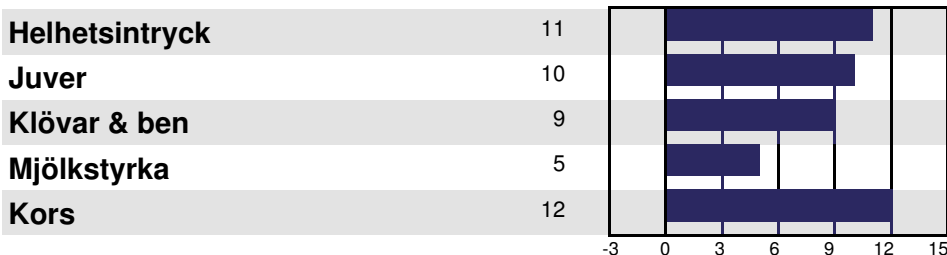


Marsi Frontrunner Lilo
2008



Moorclose Frontrunr Laurel
2008

Besättningar: **76** Dottrar: **110** Säkerhet: **91%** GEBV 10*APR



BESKRIVANDE EGENSKAPER GP eller bättre %: 64

GP eller bättre %	GP eller bättre %	GP eller bättre %	GP eller bättre %
Juverdjup 6S	djup	grunt	
Juvernävnad 9	stum	elastisk	
Mittligament 7	svag	stark	
Framjuverfäste 5	svag	stark	
Spennplacering fram 1W	bred	tät	
Bakjuverhöjd 8	låg	hög	
Bakjuverbredd 5	smal	bred	
Spennplacering bak 3W	bred	tät	
Spennlängd 5L	kort	långa	
Kotvinkel 6	vek	brant	
Klövtrakt 10	grund	hög	
Benkvalité 2	rund	flat	
Has från sidan 12S	rak	krokig	
Hasvinkel 0	oönskad	önskad	
Has bakifrån 5	hastrång	parallell	
Reslighet kors 7	låg	hög	
Reslighet fram -3	låg	hög	
Bröstbredd 2	tät	bred	
Kroppsdjup -4	grund	djup	
Revbenslutning 6	brant	lutande	
Rygg-länd 7	svag	stark	
Korslutning 9L	hög	låg	
Pinplacering 9	oönskad	önskad	
Pinbredd 7	smal	bred	

CONFIRMATION

Livslängd 104 G**Celltal** 2.93 G**Laktationskurva** 97 G**Dotterfertilitet** 97 G**Mjölkarhet** 101 G**Lynne** 94 G**Kalvningar F** 97 G**Kalvningar MF** 104 G

FRONTRUNNER *RC (0200HO00379)



[Neveridle Fronrunner 852](#) - 2009



[Lindrian Fronrunner Dill 61](#) - 2008



[Maplelane Man Frn Vail Tw](#) - 2009



[Maplelane Manor Front Midge](#) - 2009



[LKI Fronrunner Crazy](#) - 2008



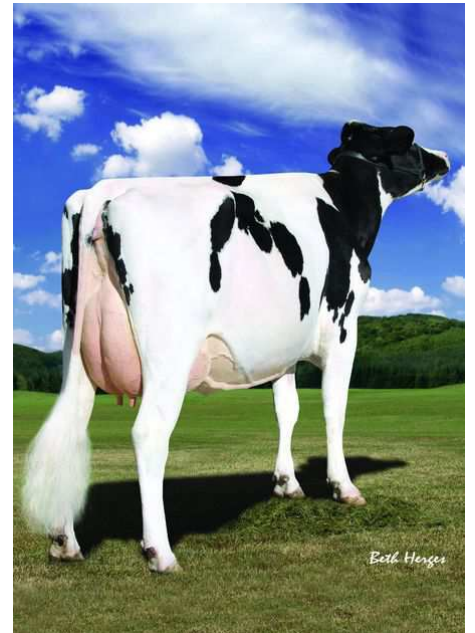
[Vallevue Fronrunner Lana](#) - 2008



[Marsi Fronrunner Lilo](#) - 2008



[Moorclose Frontrunr Laurel](#) - 2008



[Moorclose Frontrunr Laurel](#) - 2008



MORSAN FRONTRUNNER

HOCANM7472411 *BLF*CVF*RDC ET GT B:2004 Apr 06
GP-83-4YR-CAN ST'09
F&L:77 DS:84 R:90
CAN-GEBV Jan*10 94%Rel GLPI+1086/87%
KG M+93/27% F+12/43% %F+0.08
SCS 2.97 P+22/60% %P+0.17
CAN-GEBV Jan*10 91%Rel Conf+11/98%
MS+10 F&L+9 DS+5 R+12
Progeny Data: 112 Daus: 71% GP+
0EX 8VG 71GP 31G 2F
121 DAUS ME AVG: 11456 427 3.7 369 3.2
AVG BCA: M216 F219 P223

Prepared for:
THE SEMEX ALLIANCE
GUELPH ON
Tel: 519-821-5060

4th & 5th Maternal Dam
MARKWELL MARK ELITE EX-92-4E-USA 3*
ROCKALLI MARS EMILY EX-94-4E-USA

LADINO PARK TALENT-IMP-ET

HOAUSM930377 *BLF*CVF*RDC ET GT
EX-90-6YR-AUS ST'03
CAN-GEBV Jan*10 99%Rel GLPI+607/64%
KG M+88/27% F-20/8% %F-0.23
SCS 3.21 P+13/43% %P+0.09
CAN-GEBV Jan*10 99%Rel Conf+12/99%
MS+13 F&L+7 DS+3 R+13
Progeny Data: 10572 Daus: 77% GP+
119EX 2517VG 5499GP 2306G 131F
11086 DAUS ME AVG: 10996 400 3.6 351 3.2
AVG BCA: M208 F205 P212

MAUGHLIN STORM

HOCANM5457798 *BLF*CVF*BRC ET GT
EX-CAN EXTRA'96
CAN-GEBV Jan*10 99%Rel GLPI+545/59%
KG M+186 F+30 %F+0.23 P+3 %P-0.02
CAN-GEBV Jan*10 99%Rel Conf+5
MARKWELL LEADER ROSE-ET
HOUSAF15804313 *RDC ET GT
EX-91-2E-USA VG-86-3YR-CAN
02-11 305 12052 488 4.0 400 3.3
365 13830 584 4.2 474 3.4
1 LACT: 14334 612 4.3 496 3.5 KG

MADAWASKA AEROSTAR

HOCANM383622 *BLF*CVF GT
EX-CAN EXTRA'92 GM'95
WYKHOLME DEWDROP TACY ET
HOCANF4467150 ET GT
VG-89-9YR-CAN 8*(18/22)
KINGLEA LEADER
HOUSAM1926780 *BLF*CVF*DPF*RDC GT
VG-87-13YR-USA GM'95
STOOKEY ELM PARK BLACKROSE-ET
HOUSAF14085789 *BLF*RDC ET GT
EX-96-3E-USA GMD DOM 7*(0/35)

MARKWELL JAMES FIONA-ET

HOUSAF129584391 ET GT B:2000 Feb 26
VG-89-4YR-CAN 2*(6/5)
MS:90 (FA:8 RAH:8 RAW:8) F&L:87 DS:90 R:86
CAN-EBV Jan*10 81%Rel LPI+1252/94%
KG M+815/80% F+27/80% %F-0.05
SCS 2.95 P+33/91% %P+0.06
CAN-EBV Jan*10 69%Rel Conf+10/97%
MS+9 F&L+6 DS+5 R+8
02-03 305 11149 411 3.7 360 3.2
365 12913 471 3.6 417 3.2
BCA 282 280 286
04-01 215 9593 367 3.8 306 3.2
2 LACT: 24217 898 3.7 780 3.2 KG
AVG BCA: M282(+21) F280(+32) P286(+37)
RES. ALL-CANADIAN SR.2-YR 2002
2ND SR.2-YR 2002 ROYAL
1ST SR.2-YR 2002 AGRIBITION
2ND 4-YR 2004 AB DAIRY CONGRESS
GRAND 2004 CHILLIWACK
Progeny Data: 0EX 2VG 1GP 0G 0F
3 DAUS ME AVG: 14335 504 3.5 438 3.1
AVG BCA: M271 F258 P265

SHOREMAR JAMES

HOCANM5902195 *BLF*CVF GT
GP-81-2YR-CAN EXTRA'98
CAN-GEBV Jan*10 99%Rel GLPI-3/24%
KG M-424 F+12 %F+0.26 P+12 %P+0.23
CAN-GEBV Jan*10 99%Rel Conf+3
MARKWELL RUDOLPH RHODA-ET
HOUSAF120534380 ET GT
EX-92-3E-USA DOM
02-03 305 10723 371 3.5 343 3.2
03-11 305 13168 530 4.0 428 3.3
365 15372 610 4.0 505 3.3
07-03 305 12574 458 3.6 404 3.2
3 LACT: 69573 2655 3.8 2373 3.4 KG
Progeny Data: 0EX 1VG 2GP 0G 0F
4 DAUS ME AVG: 12375 469 3.8 409 3.3
AVG BCA: M234 F240 P247

A MARK CJ GILBROOK GRAND ET

HOCANM393207 *BLF*MFF ET GT
VG-86-5YR-CAN EXTRA'93
STELBRO JENINE AEROSTAR
HOCANF5337384 *BLF GT
VG-85-4YR-CAN
STARTMORE RUDOLPH
HOCANM5470579 *BLF*CVF ET GT
EX-CAN GM EXTRA'96
MARKWELL BSTAR E RAVEN-ET
HOUSAF14435688 *BLF*CVF ET GT
EX-95-3E-USA GMD DOM 5*(8/25)
04-09 305 14379 623 4.3 485 3.4
365 16606 717 4.3 569 3.4
3 LACT: 72585 3004 4.1 2614 3.6 KG
Progeny Data: 0EX 2VG 1GP 0G 0F
3 DAUS ME AVG: 15341 612 4.0 501 3.3
AVG BCA: M290 F314 P303